

**Donders!**

& van der heiden

www.denkers in tuinen.nl  
info@denkersintuinen.nl  
HOOGAKKERLAAN 62  
7314EM APELDOORN  
Tel:055 57 62 319  
Fax:055 57 62 463

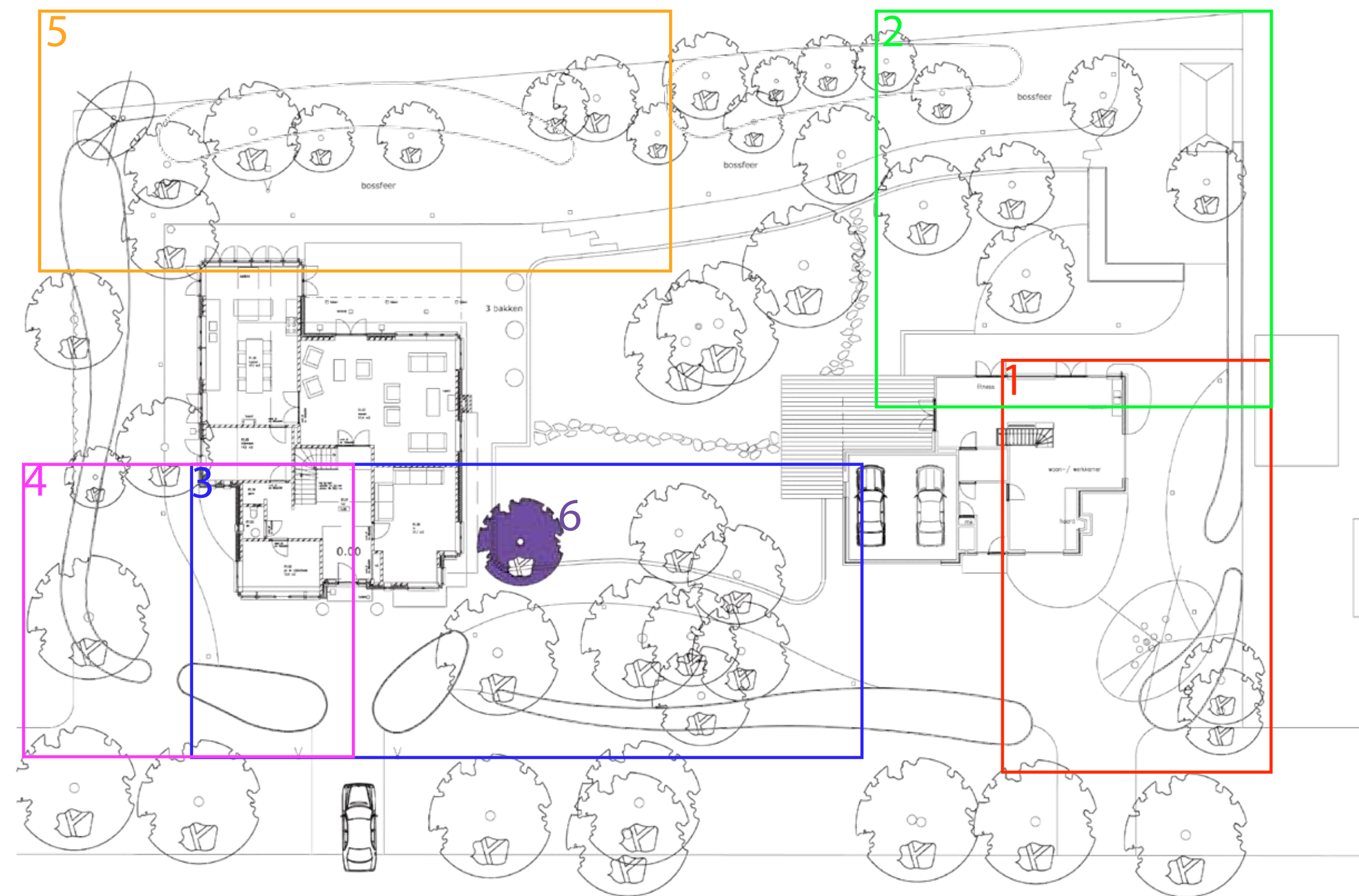


# beplantingsplan

**apeldoorn**

denkers in tuinen

# Indeling beplantingsplan







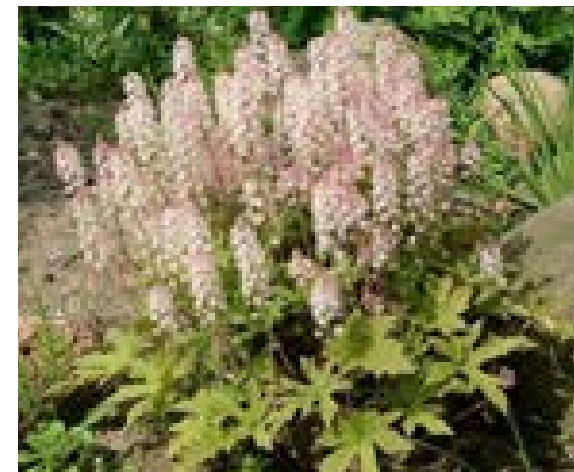
Geranium 'Rozanne'



Persicaria amplexicaulis 'Lisan'



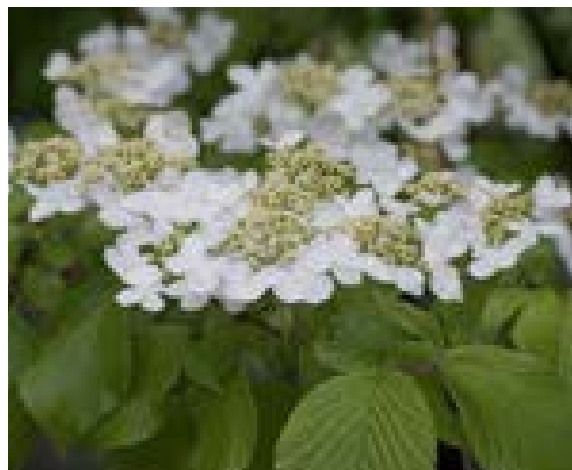
Nepeta faassenii 'Walker's Low'



Tiarella wherryi



Amsonia tabernaemontana



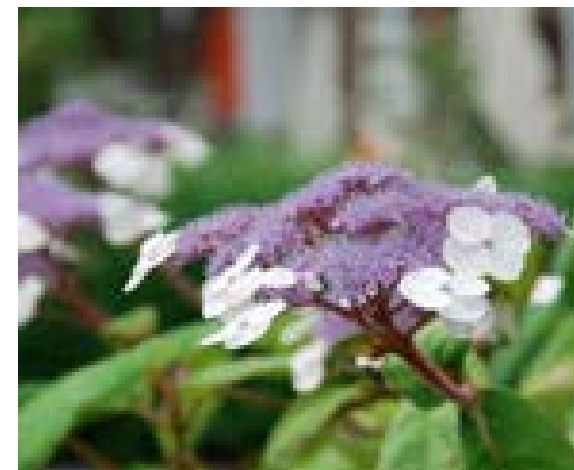
Viburnum plicatum 'Mariesii'



Alchemilla mollis



Pennisetum alopecuroides 'Hameln'



Hydrangea 'Aspera'



Geranium macrorrhizum 'Spessart'

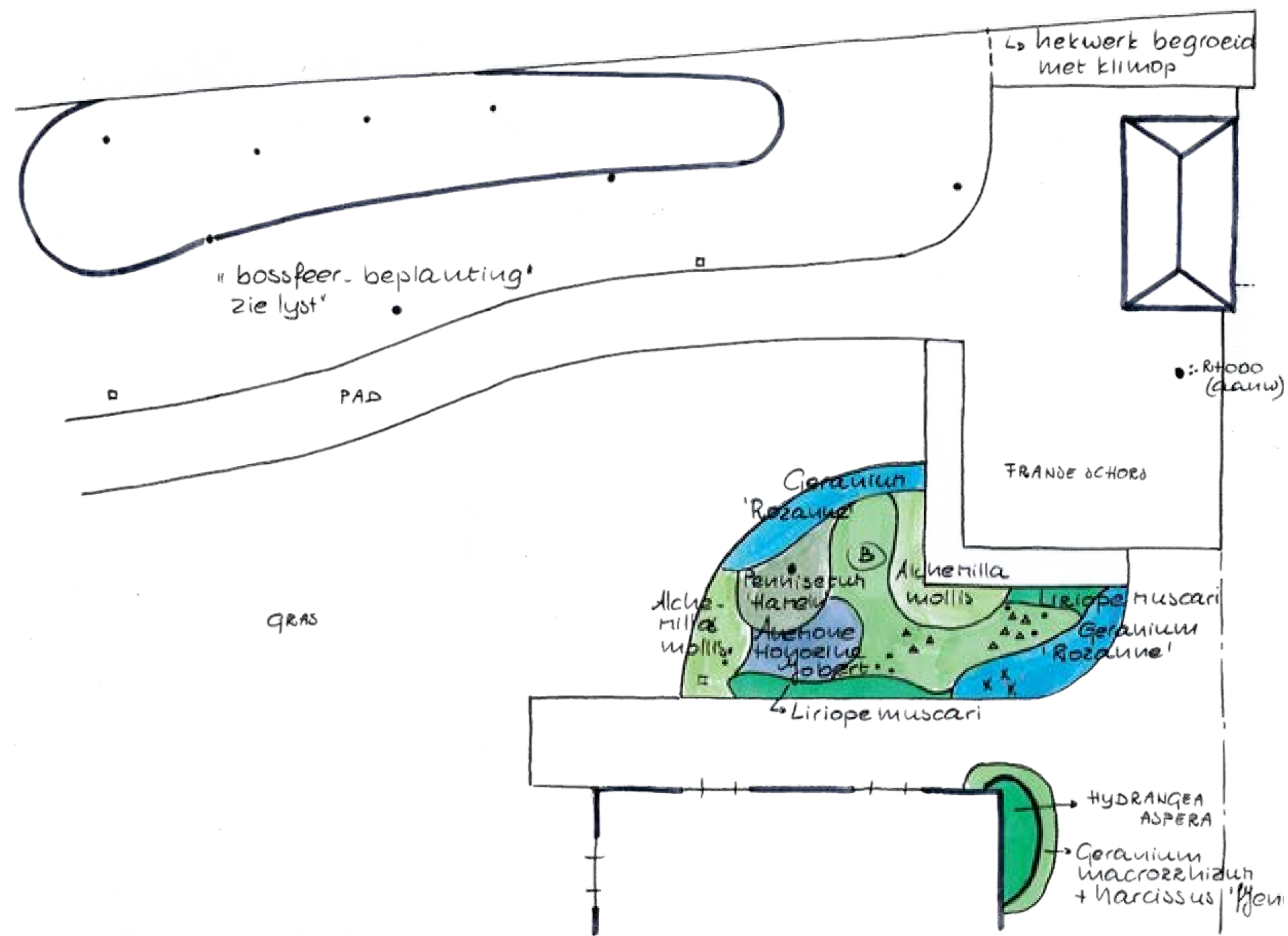


Viburnum plicatum 'Mariesii'



Narcissus 'Jenny'

2



Donders!  
& van der heiden

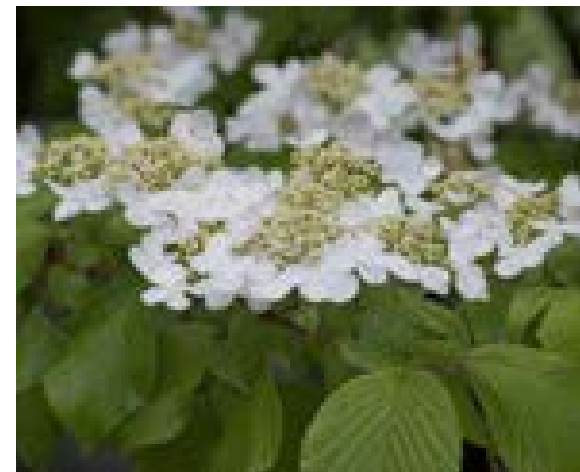
www.denkersintuinen.nl  
info@denkersintuinen.nl  
HOOGAKKERLAAN 62  
7314EM APELDOORN  
Tel:055 57 62 319  
Fax:055 57 62 463

denkers in tuinen

3



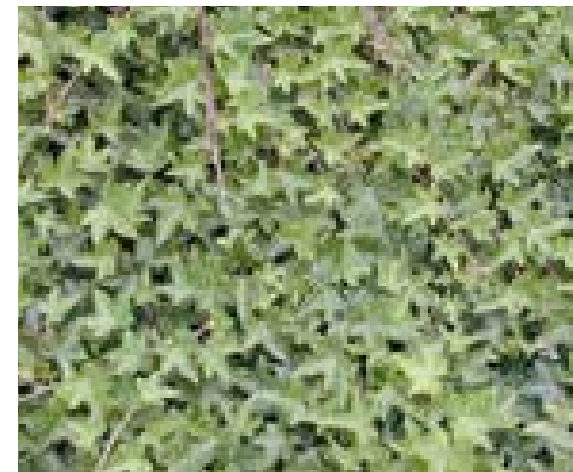
Luzula nivea



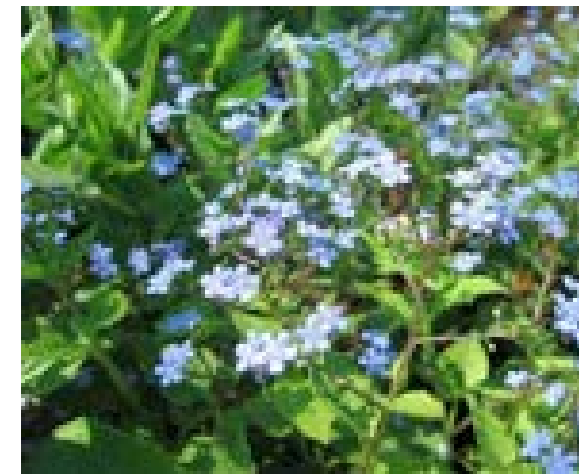
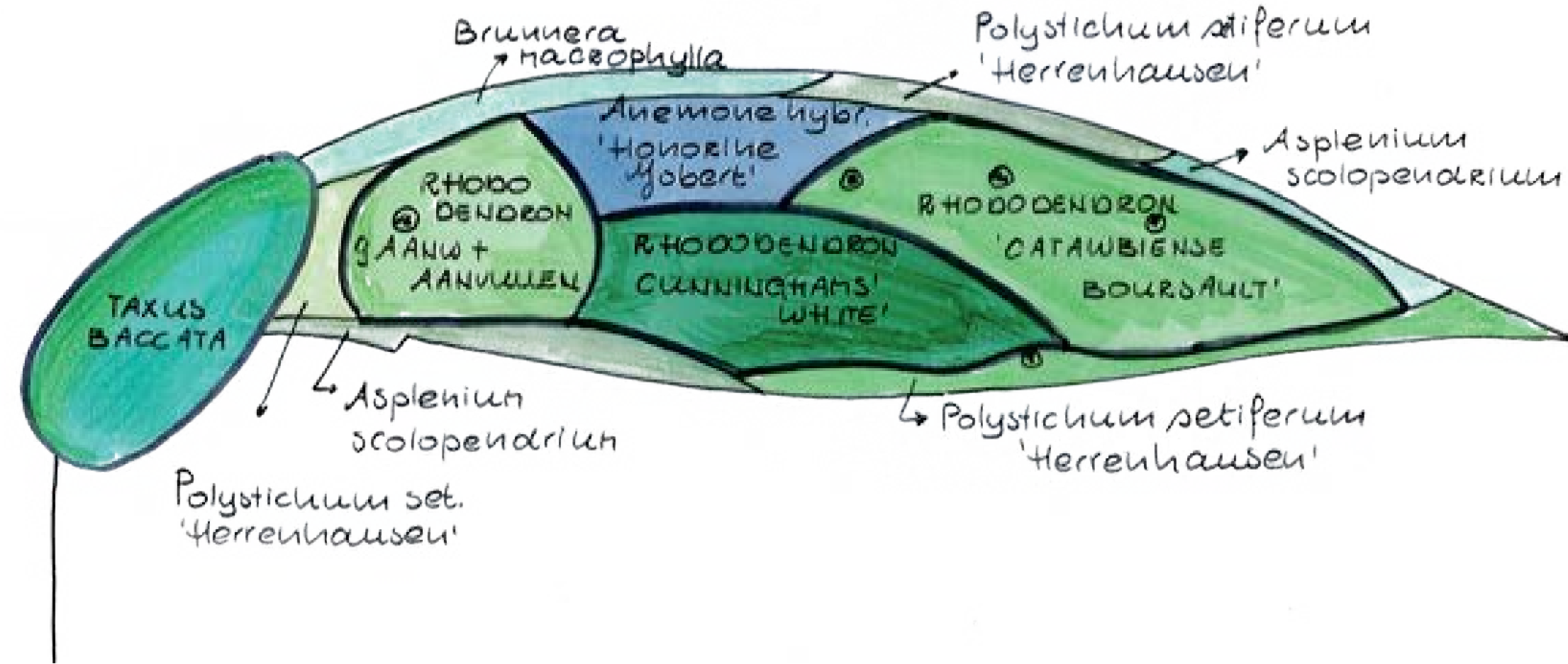
Viburnum plicatum 'Mariesii'



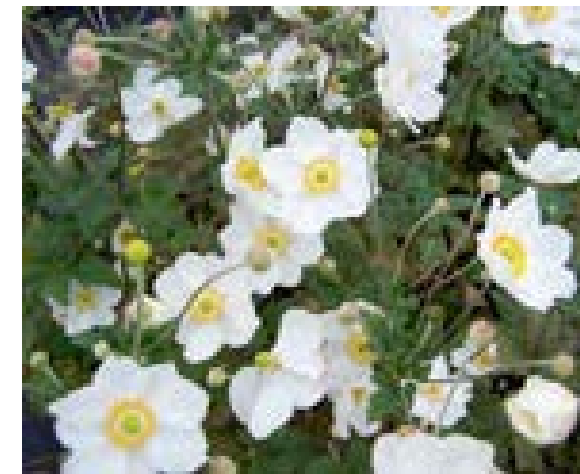
Taxus baccata



Hedera helix



Brunnera macrophylla



Anemone hybrida 'Honorine Jobert'



Polystichum setiferum 'Herrenhausen'



Rhododendron 'Cunningham's White'



Asplenium scolopendrium

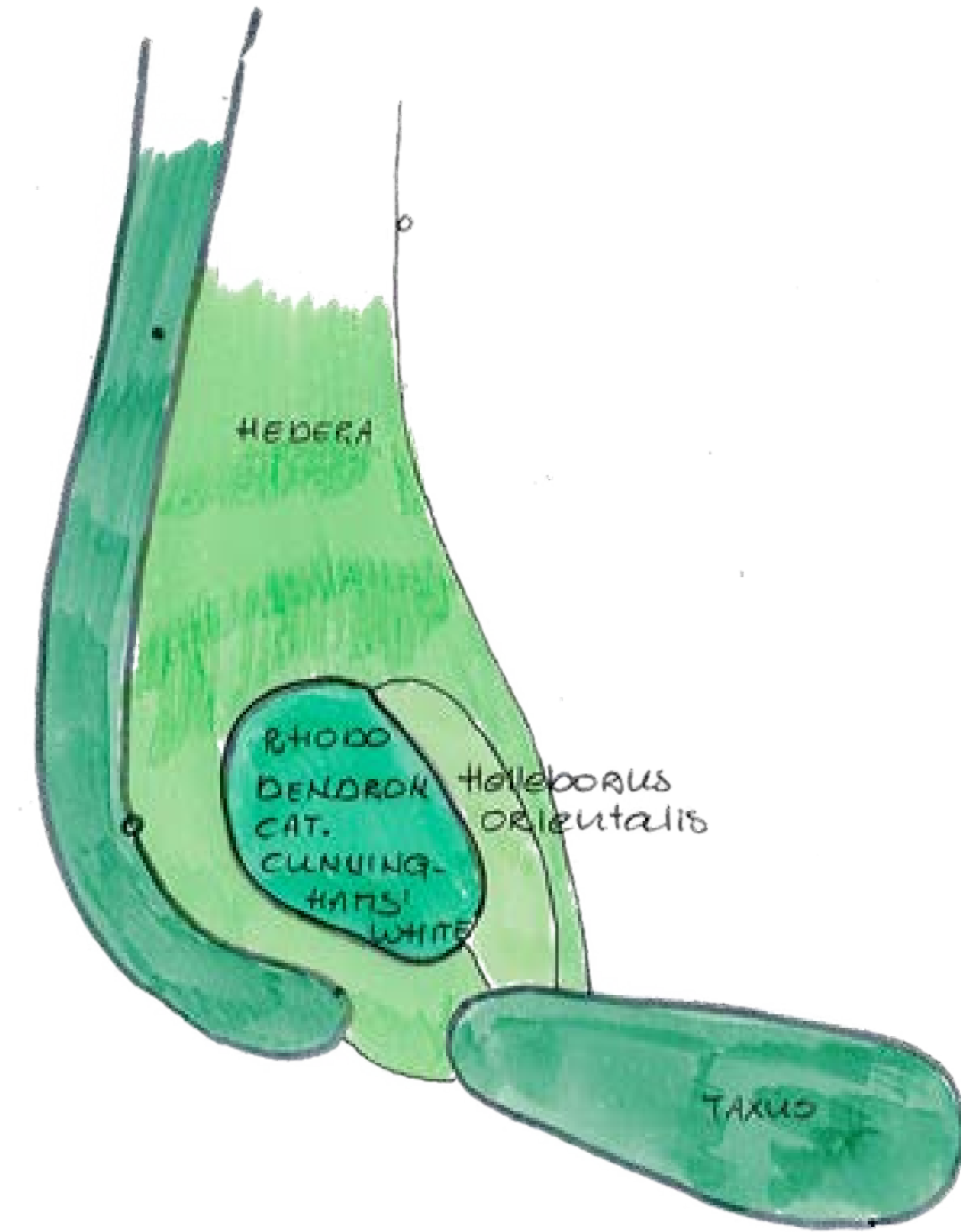


Helleborus orientalis



Rhododendron 'Catawbiense Boursault'

4

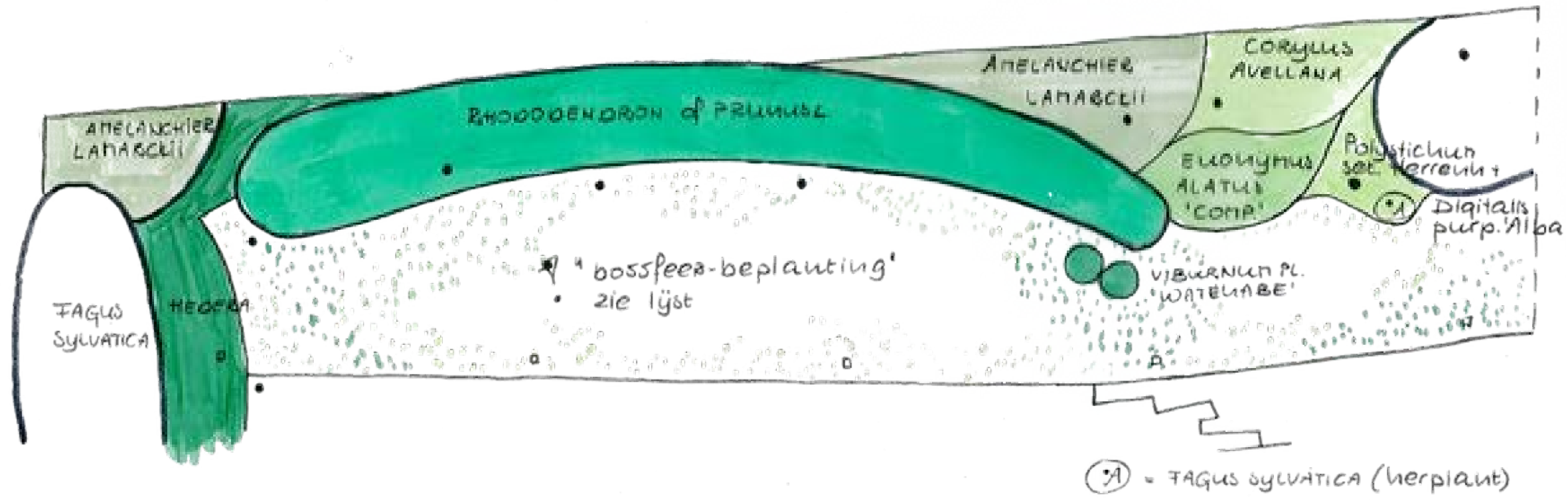


Donders!  
& van der heiden

www.denkers in tuinen.nl  
info@denkersintuinen.nl  
HOOGAKKERLAAN 62  
7314EM APELDOORN  
Tel:055 57 62 319  
Fax:055 57 62 463

denkers in tuinen

5



Amelanchier lamarckii (herfst)



Polystichum setiferum 'Herrenhausen'

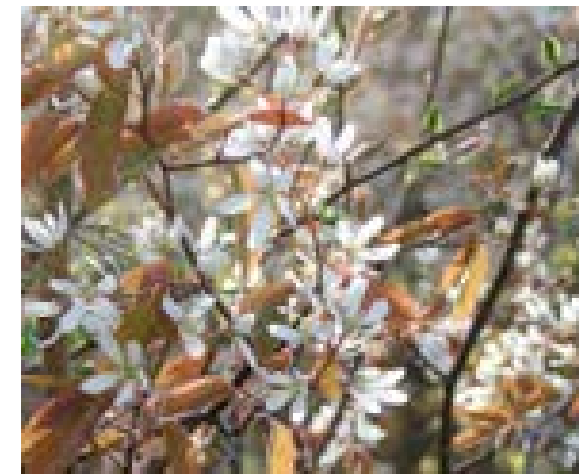
6



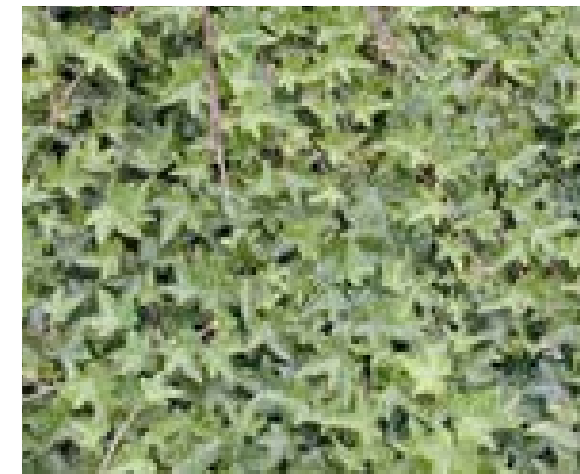
Fagus sylvatica 'Atropunicea'



Liriodendron tulipifera



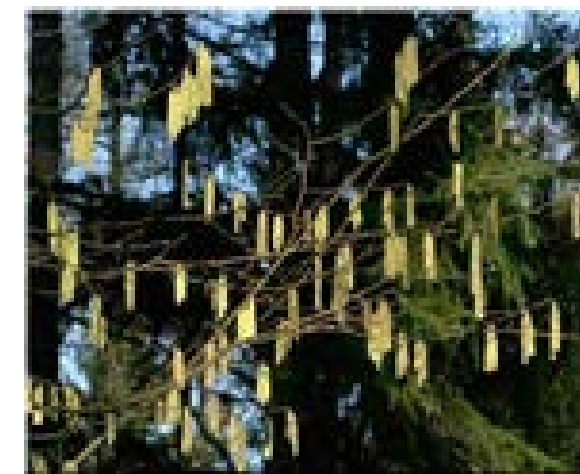
Amelanchier lamarckii (Voorjaar)



Hedera helix



Prunus laurocerasus



Corylus avellana (Voorjaar)



Corylus avellana (Zomer)



Euonymus alatus 'Compactus' (Herfst)



Euonymus alatus 'Compactus'



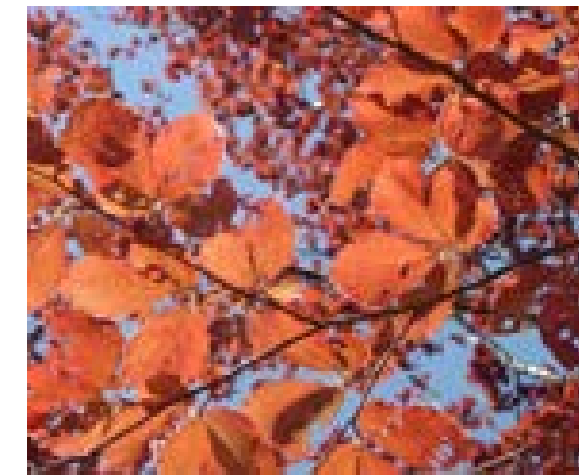
Prunus laurocerasus



Viburnum plicatum 'Watanabe'



Digitalis purpurea 'Alba'



Fagus sylvatica 'Atropunicea' (blad in zomer)



Fagus sylvatica 'Atropunicea' (herfst)



Liriodendron tulipifera (herfst)



Liriodendron tulipifera (bloei zomer)

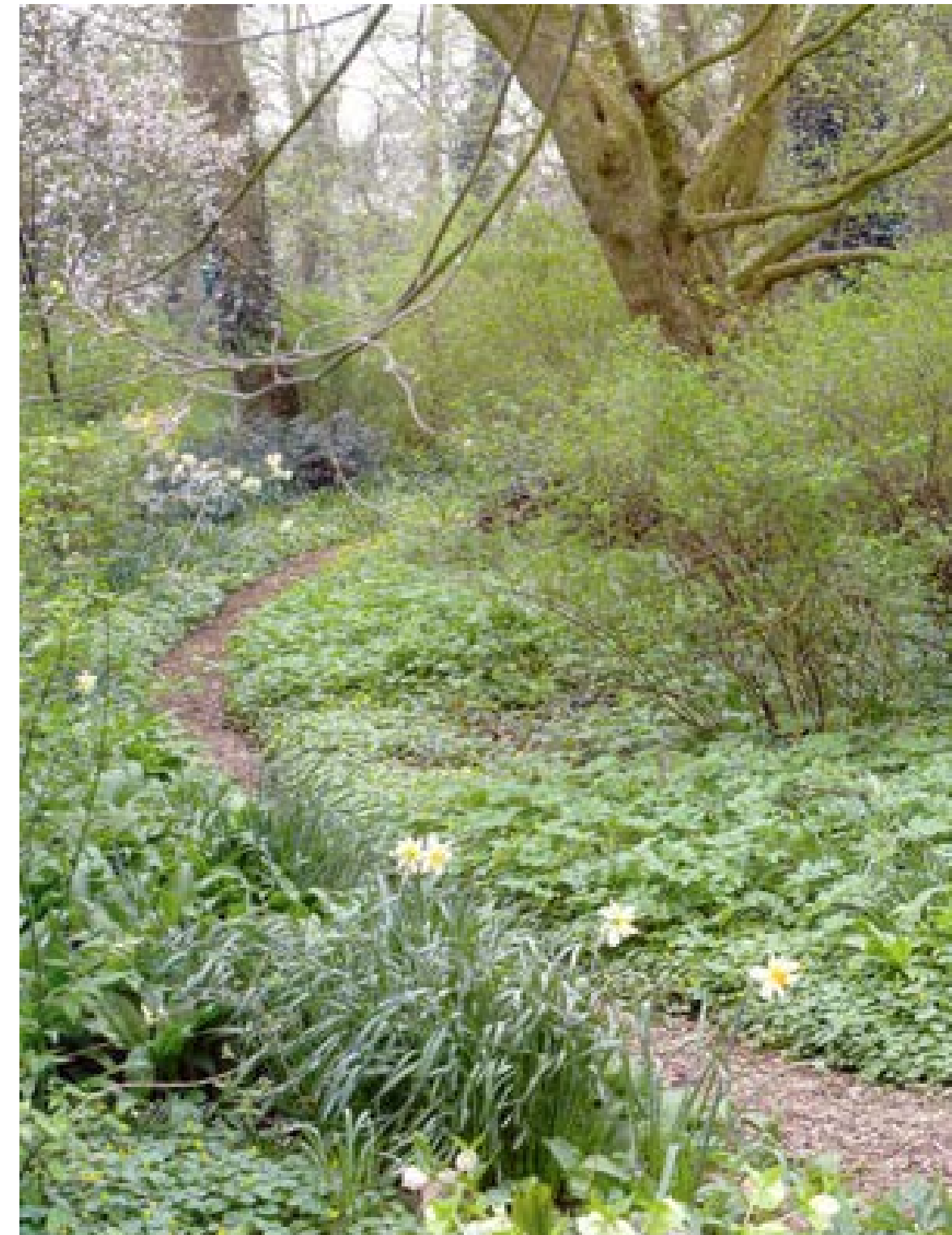
Donders!  
& van der heiden

www.denkersintuinen.nl  
info@denkersintuinen.nl  
HOOGAKKERLAAN 62  
7314EM APELDOORN  
Tel:055 57 62 319  
Fax:055 57 62 463

denkers in tuinen

# Bossfeer

Nummer	Latijnse naam	Nederlandse naam	Vak	Maat	Omschrijving
<b>Vaste planten</b>					
1	<i>Brunnera macrophylla</i>	Kaukasische vergeet me niet			
2	<i>Campanula garganica</i> 'WH Paine'	klokjesbloem		P9	De lagere 'bodembedekkende' planten als onderlaag gebruiken met daarin – in natuurlijke groepen – de varens en hogere planten planten. Daarin de <i>Digitalis</i> en de <i>Lunaria</i> als solitaire planten.
4	<i>Galium odoratum</i>	Lievevrouwenbedstro			
4	<i>Lamium galeobdolon</i> 'Herman's Pride'	dovenetel			
5	<i>Vinca minor</i>	maagdenpalm			
6	<i>Arum italicum</i>	aronskelk			
7	<i>Convallaria majalis</i>	Lelietje van Dalen			
8	<i>Helleborus orientalis</i>	kerstroos			
9	<i>Polygonatum multiflorum</i>	salomonszegel			
10	<i>Viola odorata</i> 'Alba'	viooltje			
11	<i>Viola canina</i>	viooltje			
12	<i>Tiarella cordifolia</i> 'Oakleaf'	Perzische muts			
13	<i>Anemone nemerosa</i>	bosanemoon			Doordit geheel de bloembollen in grotere verspreide groepen toepassen zodat een natuurlijk beeld ontstaat.
14	<i>Digitalis purpurea</i>	vingerhoedskruid			
15	<i>Digitalis purpurea</i> 'Alba'	vingerhoedskruid			
16	<i>Lunaria annua</i>	judaspenning			
17	<i>Trillium grandiflorum</i>	Drieblad			
18	<i>Trillium luteum</i>	drieblad			
19	<i>Blechnum spicant</i>	dubbelvaren			
20	<i>Asplenium scolopendrium</i>	tongvaren			
21	<i>Athyrium niponicum</i> 'Pictum'	wijfesvaren			
22	<i>Polystichum setiferum</i> 'Herrenhausen'	niervaren			
<b>Bloembollen in de bossfeer</b>					
23	<i>Scilla sibirica</i>				De bloembollen vormen een belangrijk onderdeel van de beplanting. Deze bollen in grotere natuurlijke groepen uitzetten.
24	<i>Corydalis solida</i>				
25	<i>Allium ursinum</i>				
26	<i>Tulipa sylvestris</i>				
27	<i>Hyacinthoides non scripta</i>				
28	<i>Hyacinthoides</i> 'Blue Bells'				
29	<i>Leucojum vernum</i>				
30	<i>Narcissus</i> 'February Gold'				



Sfeerbeeld bossfeer



1. Brunnera macrophylla



2. Campanula garganica 'WH Paine'



3. Galium odoratum



4. Lamium galeobdolon 'Herman's Pride'



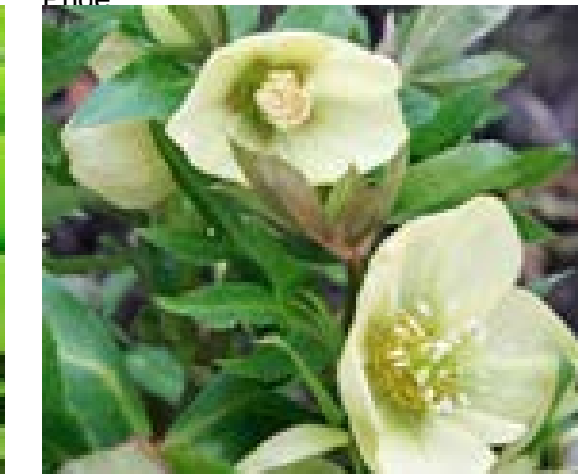
5. Vinca minor



6. Arum italicum



7. Convallaria majalis



8. Helleborus orientalis



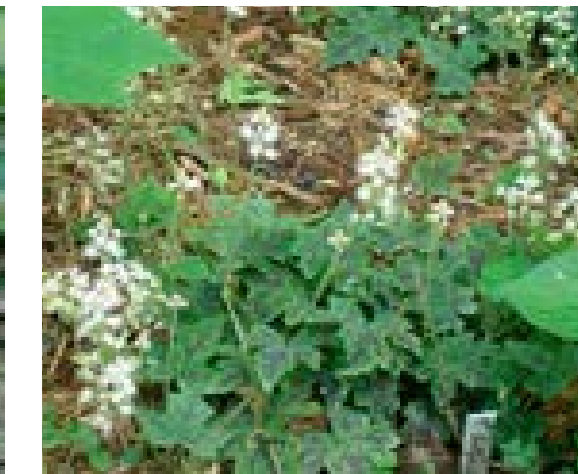
9. Polygonatum multiflorum



10. Viola odorata 'Alba'



11. Viola canina



12. Tiarella cordifolia 'Oakleaf'



13. Anemone nemerosa



14. Digitalis purpurea



15. Digitalis purpurea 'Alba'



16. Lunaria annua

**Donders!**  
& van der heiden

www.denkersintuinen.nl  
info@denkersintuinen.nl  
HOOGAKKERLAAN 62  
7314EM APELDOORN  
Tel: 055 57 62 319  
Fax: 055 57 62 463

denkers in tuinen



17. *Trillium grandiflorum*



18. *Trillium luteum*



19. *Blechnum spicant*



20. *Asplenium scolopendrium*



22. *Polystichum setiferum* 'Herrenhausen'



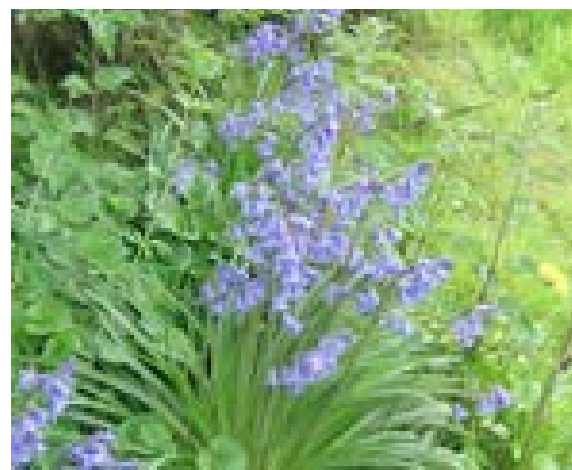
23. *Scilla sibirica*



24. *Corydalis solida*



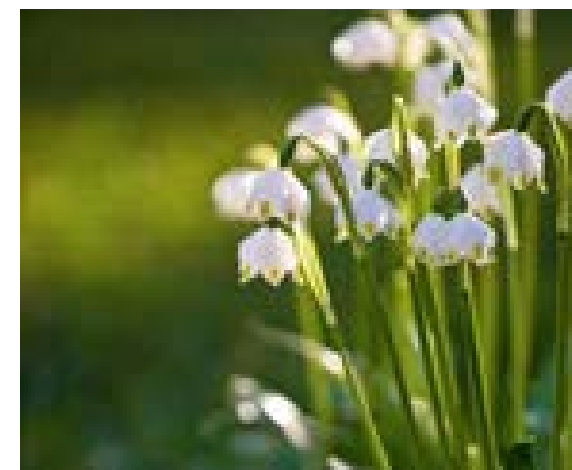
25. *Allium ursinum*



27. *Hyacinthoides non scripta*



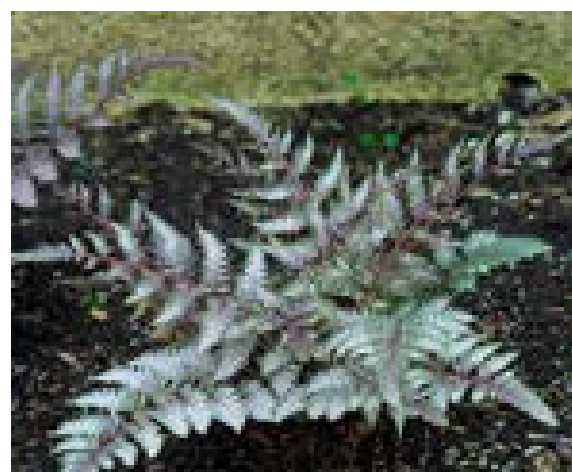
28. *Hyacinthoides* 'Blue Bells'



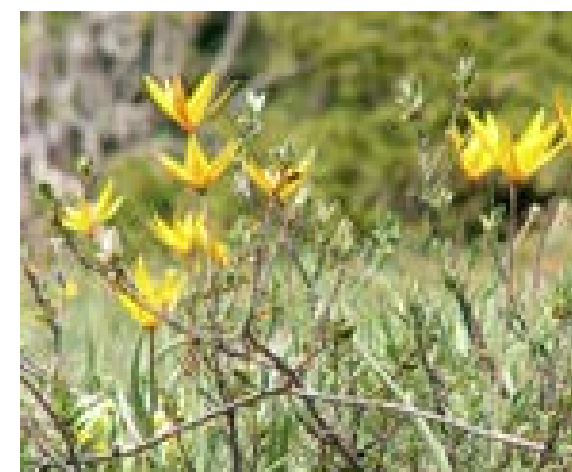
29. *Leucojum vernum*



30. *Narcissus* 'February Gold'



21. *Athyrium niponicum* 'Pictum'



26. *Tulipa sylvestris*



Donders!  
& van der heiden

www.denkers in tuinen.nl  
info@denkersintuinen.nl  
HOOGAKKERLAAN 62  
7314EM APELDOORN  
Tel:055 57 62 319  
Fax:055 57 62 463

denkers in tuinen